



City Walk project  
brochure

ARE







# AIRE

Aire is a modern apartment project consisting of from a single tower of 79 floors in the bustling center of Dubai.



+971 (4) 581-2304



# AIRE

## Direct exit at Sheikh Zayed Road

Aire is located in one of the busiest areas of Dubai - City Walk. The residential project forms a green "oasis" inside, forming a quiet inner area with a wide range of activities. Aire is located next to the Sheikh Zayed Road, allowing you to quickly and conveniently get to other parts of Dubai.



+971 (4) 581-2304



# AIRE

## In the coastal region of Jumeirah

City Walk is an entertainment district in Dubai, known for its shopping malls and entertainment base. This location is located in the Jumeirah area, in close proximity to the most popular beaches and hotels in the city.

+971 (4) 581-2304



A nighttime photograph of a modern urban street in Dubai. On the left, a building features a facade of vertical, multi-colored light strips in shades of blue, purple, and pink. On the right, a building has a grid-like facade with a large, glowing white logo that reads 'WOLF CITY'. A red and white striped awning covers a small kiosk or food stand on the right. People are walking on the wide, paved street. In the background, the Burj Khalifa is visible against the dark sky, along with other city lights.

# AIRE

## Autonomous quarter City Walk

This is an autonomous quarter with its own highly developed infrastructure. Establishments and boutiques form whole "streets" here, and there is a square for public events in Wolf City Dubai.

+971 (4) 581-2304



# AIRE

## Glass tower

The tower forms a 4-section facade with a large amount of glazing around the entire perimeter. Illumination between the sections of the facade adds a futuristic touch to the project.

glass facade

tower illumination

podium with amenities

+971 (4) 581-2304



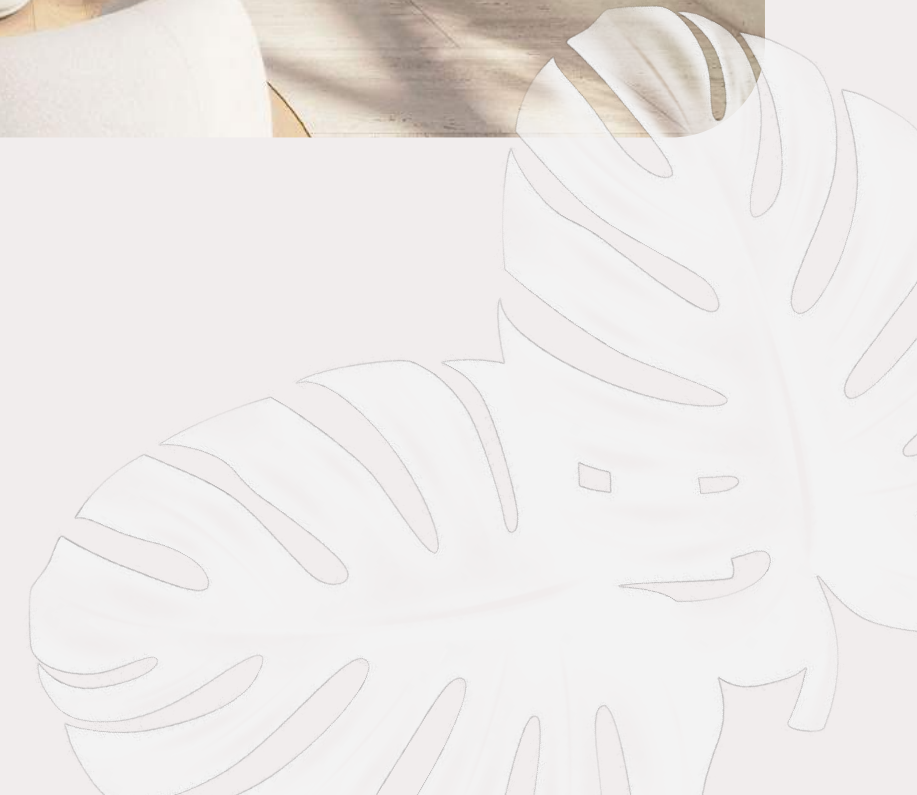
# AIRE

## Light and spacious lobby

Once in the lobby, you will see a light beige decor with high ceilings, upholstered furniture and a stone reception desk.



+971 (4) 581-2304





LAIRE

Tower entrance

+971 (4) 581-2304



# AIRE

## From apartments to three-story penthouses

The tower will feature both one-level apartments with 2, 3 and 4 bedrooms, as well as 2-level duplexes, 3-level triplexes and full-floor penthouses.

+971 (4) 581-2304





# AIRE

## Minimalist eco-interior

The design of all apartments is minimalist, yet elegantly crafted, carefully crafted to provide living areas with plenty of natural light. The interior is made mainly of natural stone and wood.



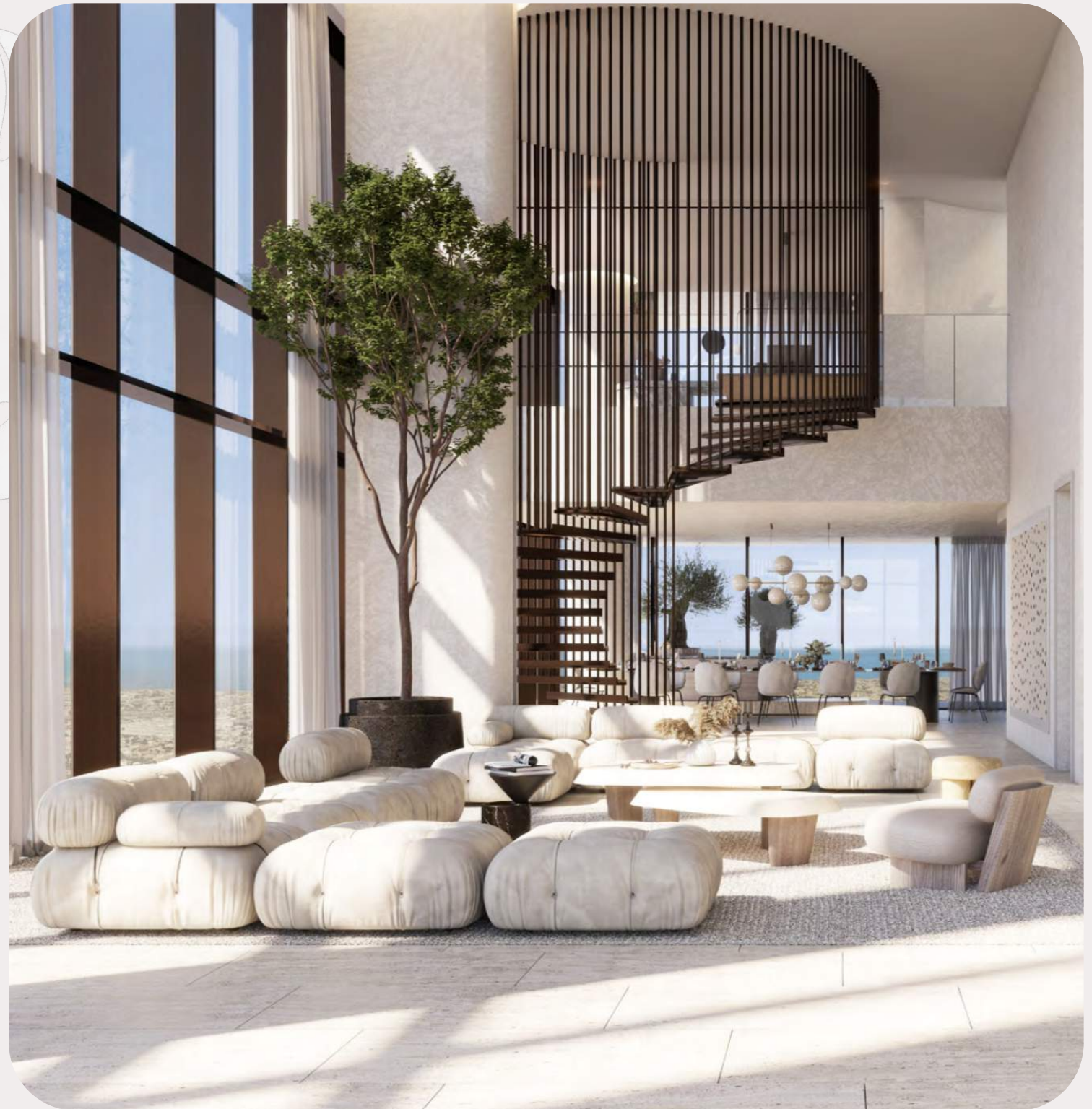
+971 (4) 581-2304



# AIRE

## Panoramic views of the center

Sliding panoramic sliding windows decorate the rooms with breathtaking views. They offer breathtaking panoramic views of the city and the Burj Khalifa tower.



+971 (4) 581-2304



AIRE

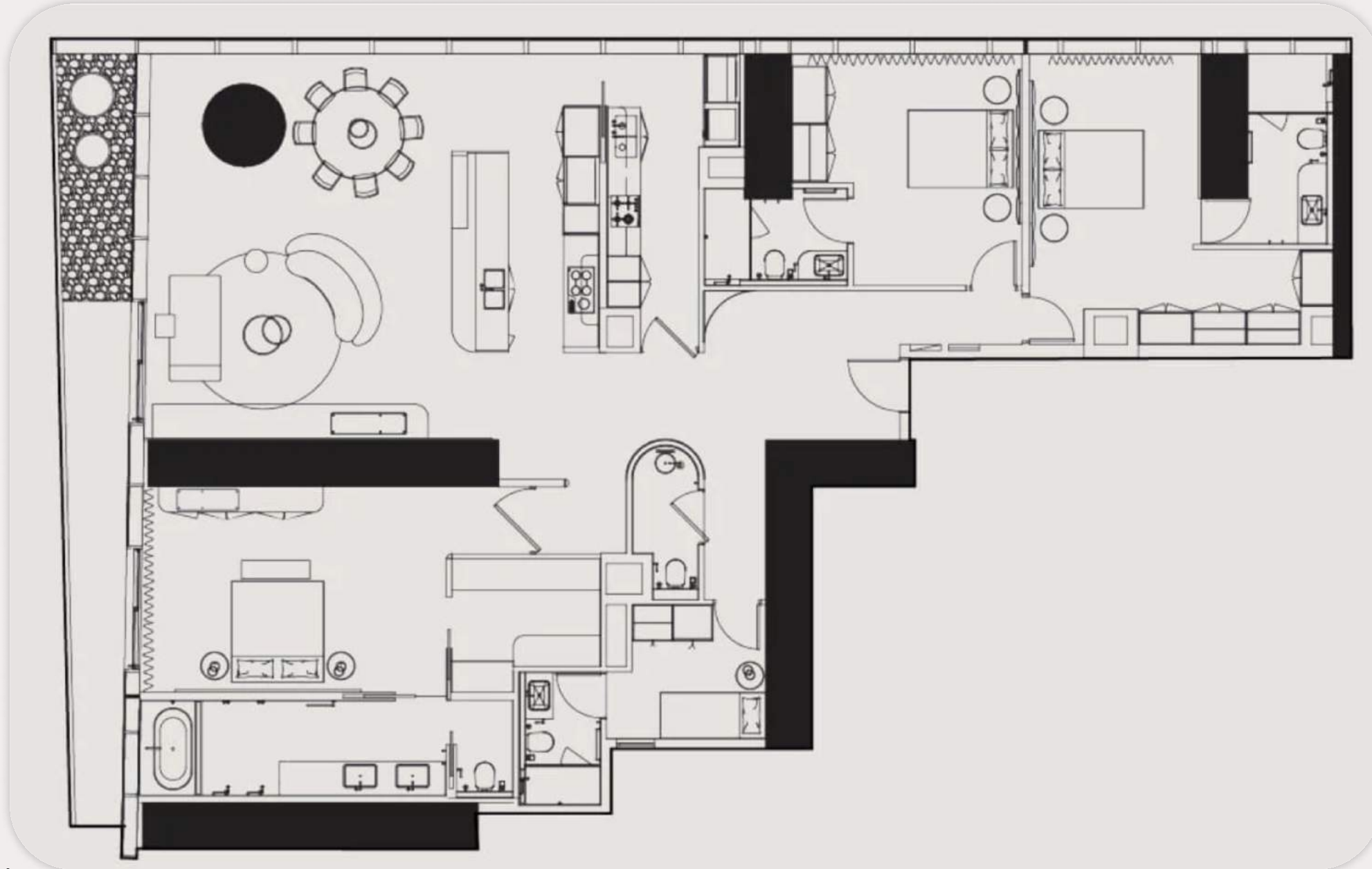
The apartments are controlled  
by the "smart home" system from Lutron.

+971 (4) 581-2304



# AIRE

## 3-bedroom apartment layout option



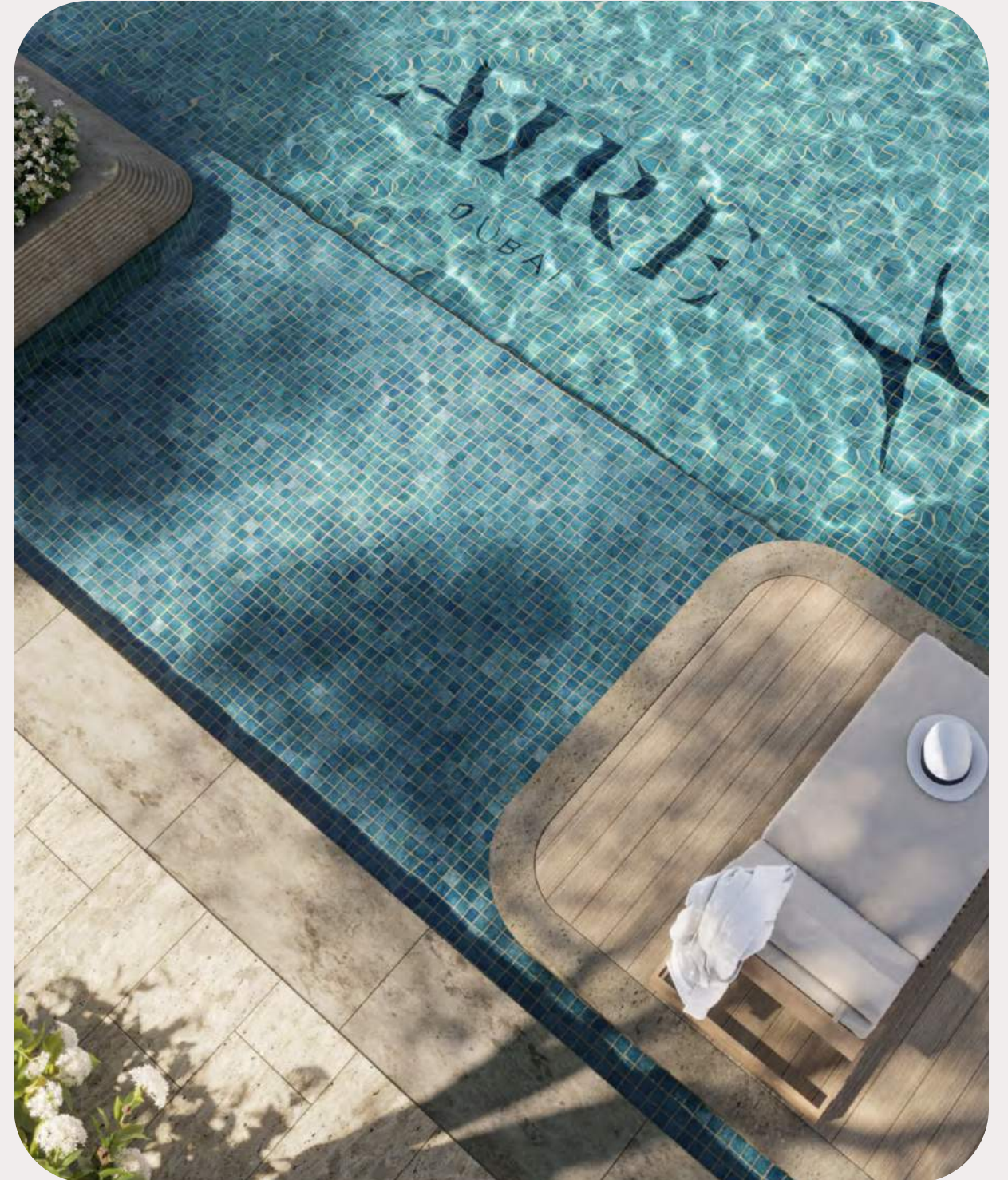
+971 (4) 581-2304



# AIRE

## Swimming pool on the podium

On the podium level, there is a large beach-style pool with upholstered furniture, where you can soak up the sun with your favorite lemonade or arrange a sports swim.



+971 (4) 581-2304





AIRE

+971 (4) 581-2304

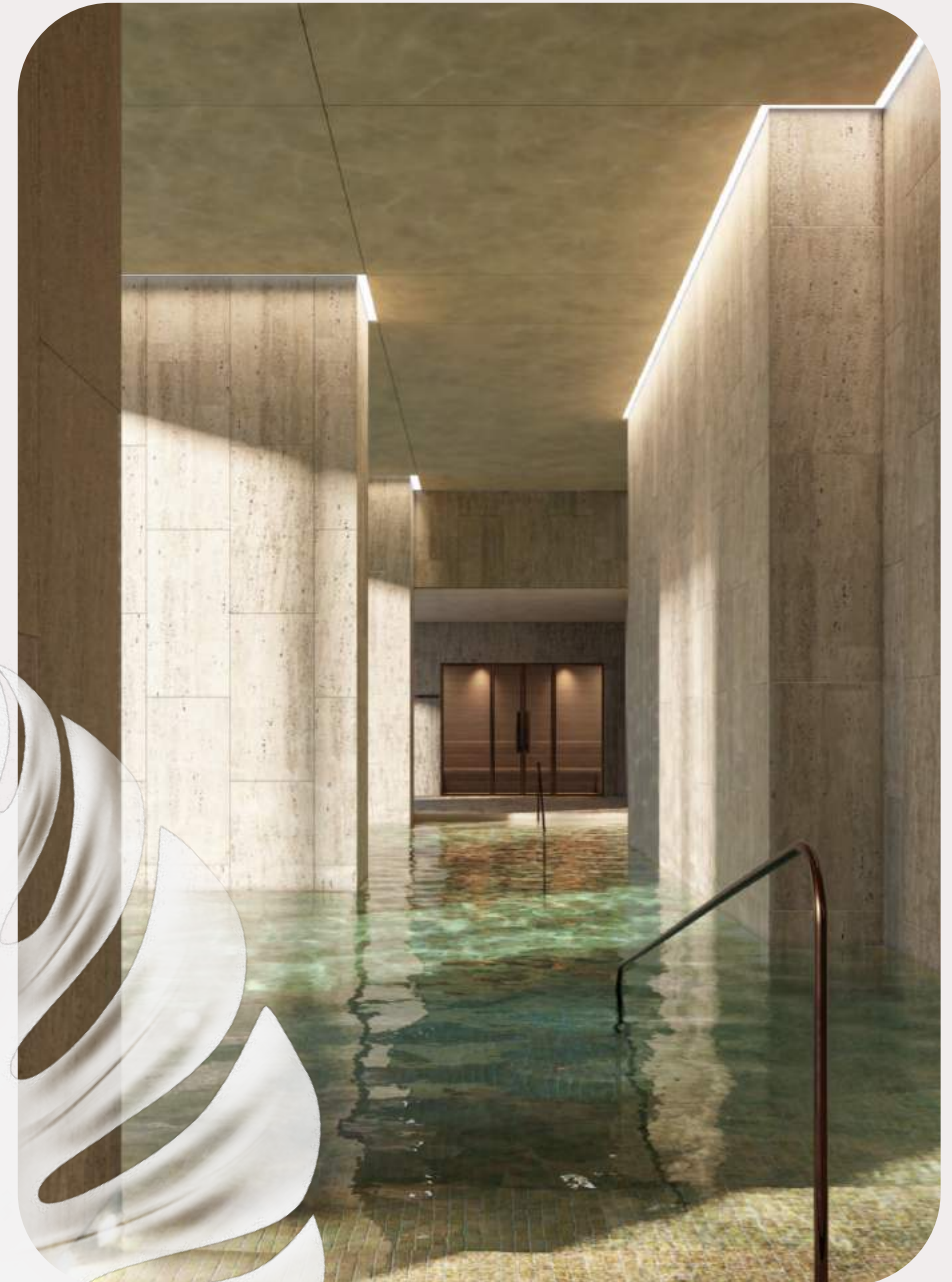


# AIRE

+971 (4) 581-2304

## Separate SPA

The project is equipped with separate spa centers with saunas and steam rooms, an ice bath and treatment rooms.





# AIRE



+971 (4) 581-2304

## Duplex gym

An equipped two-level gym with several rooms for group trainings, as well as a long jogging track along artificial ponds and greenery right in the tower will help keep fit.





# AIRE

For inner balance, there is a green room for yoga and Pilates.



+971 (4) 581-2304





# AIRE

Enjoy watching your favorite movie  
in the project's home theater.

+971 (4) 581-2304



# AIRE

You can do business and work in a coworking space with its own cafe, while the children are busy on the playgrounds.



+971 (4) 581-2304



AIRE

Skate park

+971 (4) 581-2304





# AIRE



+971 (4) 581-2304

The territory of the park of the neighboring project Central park





# AIRE



## Cafes and restaurants

Aire residents and their families can enjoy a variety of nearby restaurants and cafes. Choose dishes of your favorite gastronomic cuisine and spend the evening with your loved ones.



+971 (4) 581-2304



AIRE

Playgrounds

+971 (4) 581-2304







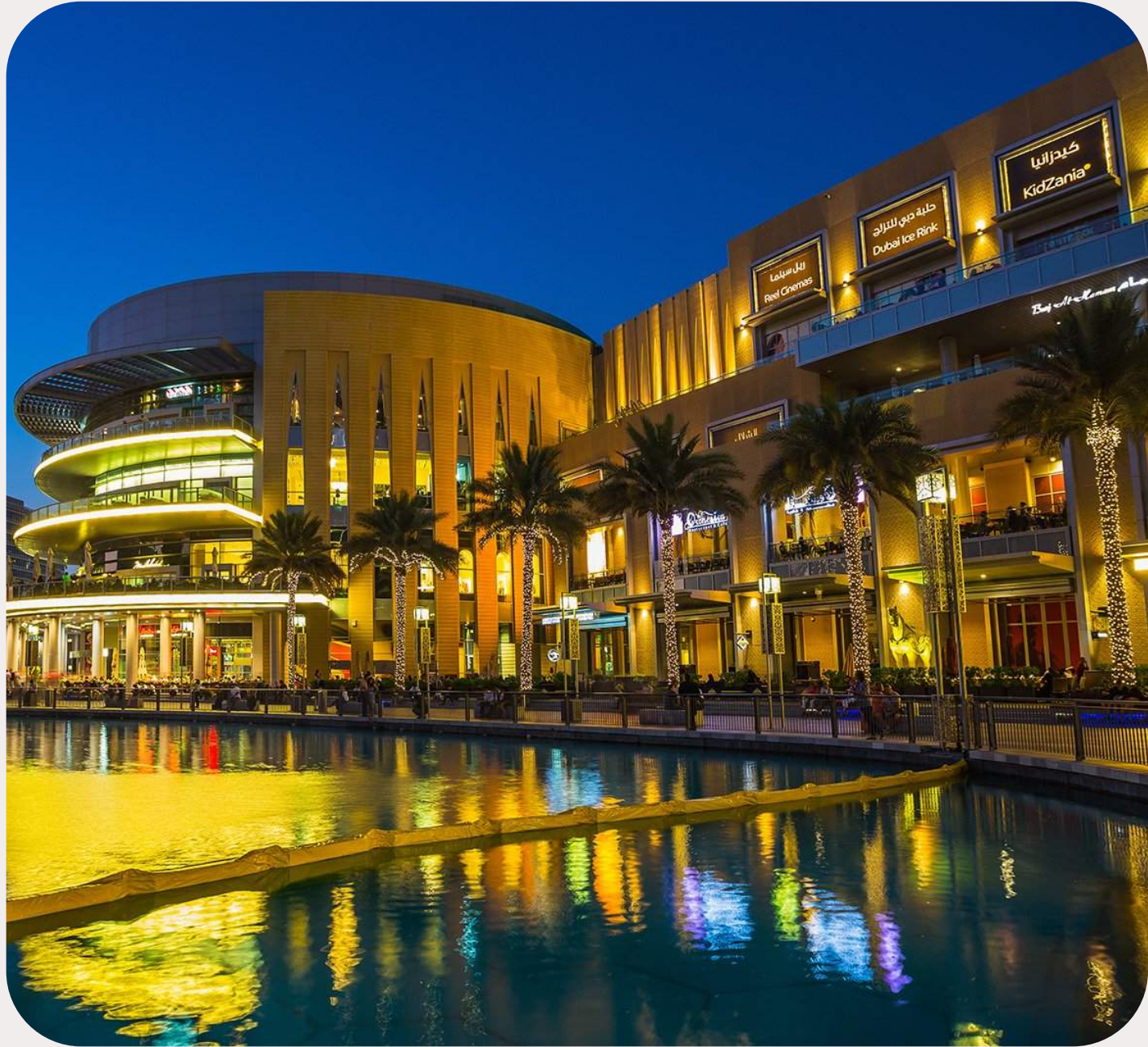
AIRE

Sports grounds

+971 (4) 581-2304



# AIRE



+971 (4) 581-2304

## Shopping center a couple of minutes

In 9 minutes you can reach the Dubai Mall and stroll through luxury shops, watch new movies in the cinema and dine in the best cafes.





# AIRE

## Project Developer – Alta Real Estate Development

Alta is a privately held development company known for its portfolio of high-profile residential and commercial developments, including Jumeirah and the Alta Tower project on the key Sheikh Zayed Highway. The developer's projects are notable for their exquisite and minimalist architecture, the unique shape of the buildings and the laconic interior made of natural materials.

+971 (4) 581-2304





# AIRE

Construction will be  
completed in 2026



+971 (4) 581-2304



# AIRE

Book a viewing by phone:  
+971 (4) 581-2304







## Whitewill Real Estate Experts

We sell deluxe, premium and business class property in more than  
140 residential developments in Dubai

**+971 (4) 581-2304**

